

PC TOOL

GETTING STARTED

The Verigo PC Tool is a PC software tool designed for computers running Windows 7 and later, with internet access, and which have the specified USB BLE dongle available from Verigo.

This tool is designed to allow distributors, partners, and customers of Verigo to quickly and easily configure or reconfigure the settings and options of a large quantity of Inactive Verigo devices before they are used for a monitoring application.

SYSTEM REQUIREMENTS

In order to use the PC, you must meet the minimum system requirements.

Core i3 2.4 Ghz

4 GByte RAM

USB Type A Port

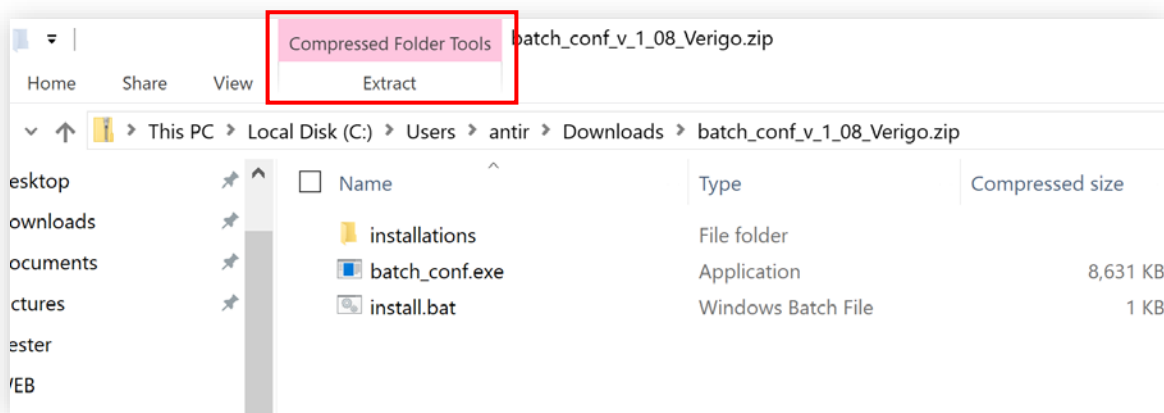
Windows 7/8/10 32 or 64-bit



INSTALLATION

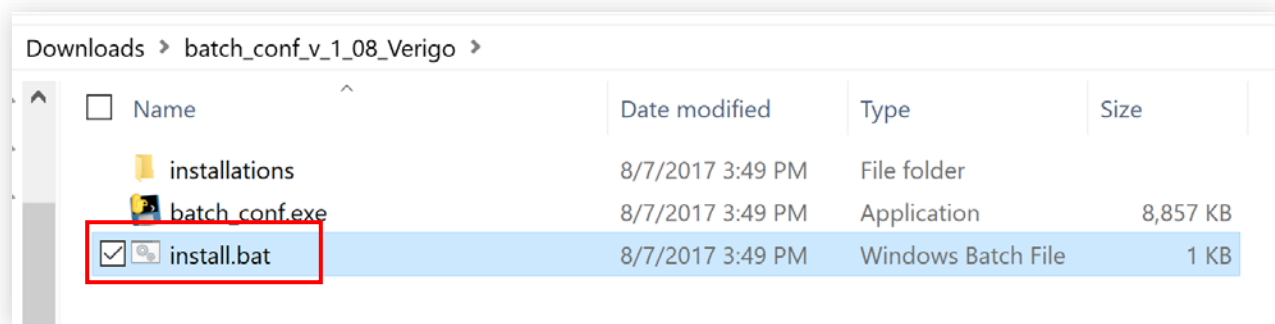
To install the configuration tool, follow the steps below.

1. Download the attached ZIP file
2. Extract all the files to a folder on your PC.
 - a) Click on the Extract Button, then Extract All

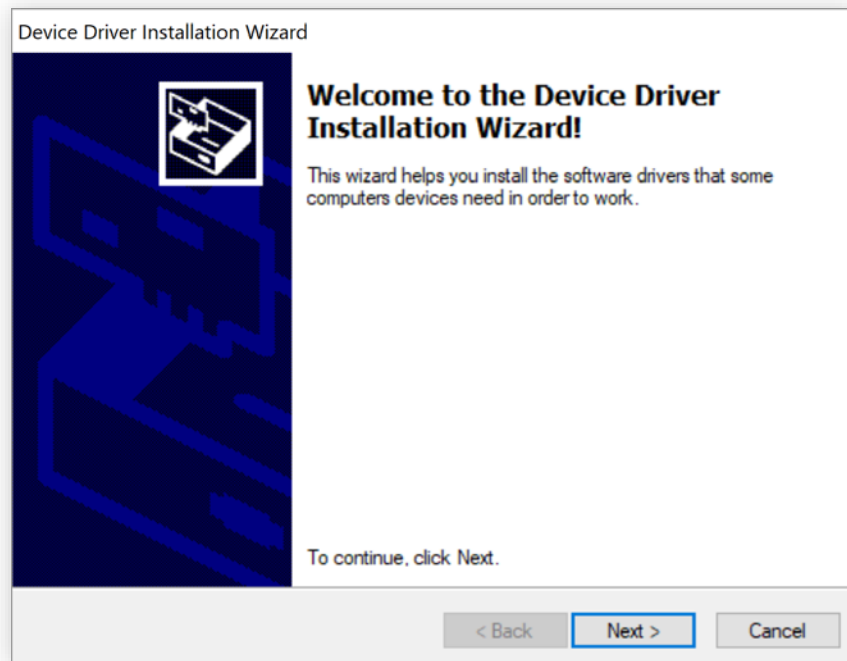


"Extract" option is located on the top of the screen.

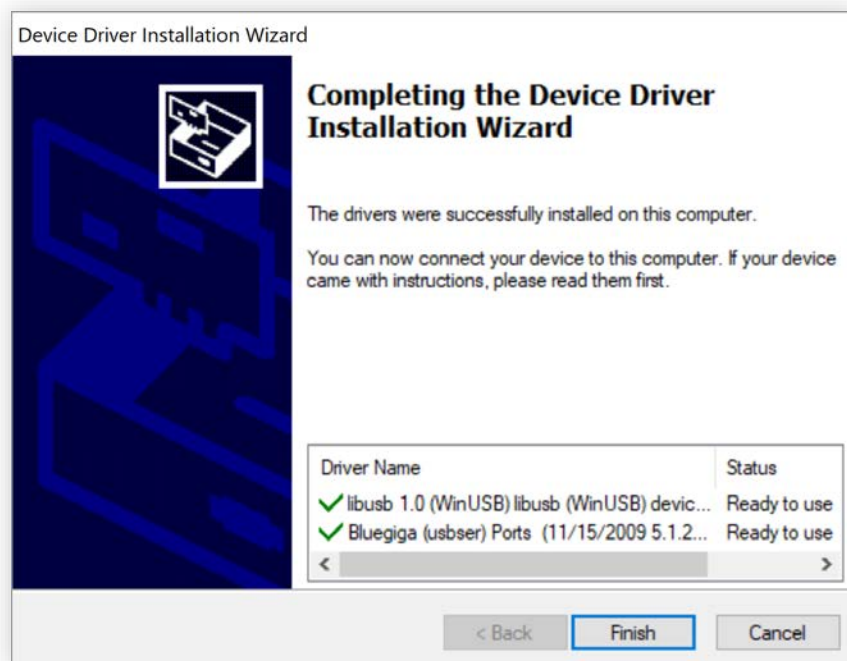
3. Open the folder where you extracted the files and double-click the "**install.bat**" file.
 - a) Later versions of the Windows operating system will give you warning messages, dismiss and allow these steps to proceed.
 - b) We recommend you temporarily disable your antivirus program before installing the driver as some antivirus programs raise a false alarm, dismiss and allow these steps to proceed.



4. Follow the steps on-screen prompts to install the necessary Driver.



Follow the steps on the installation wizard.

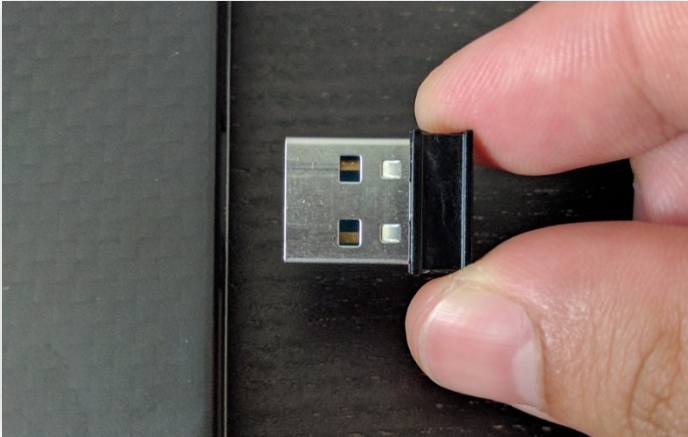


Click the "Finish" button to close the installation wizard.



PREREQUISITE

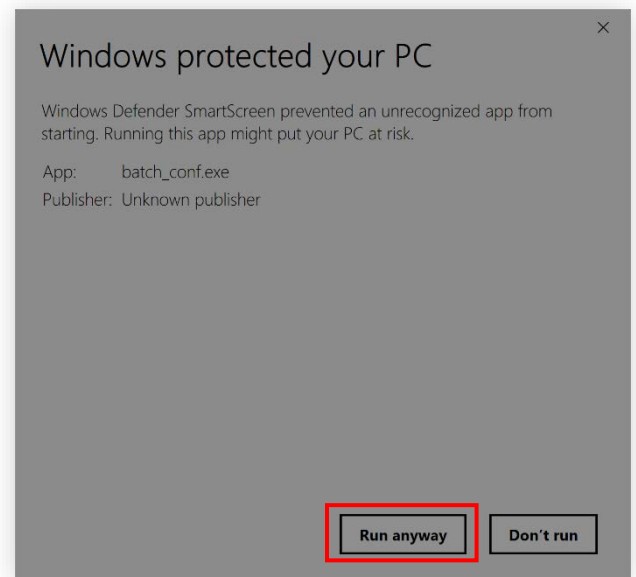
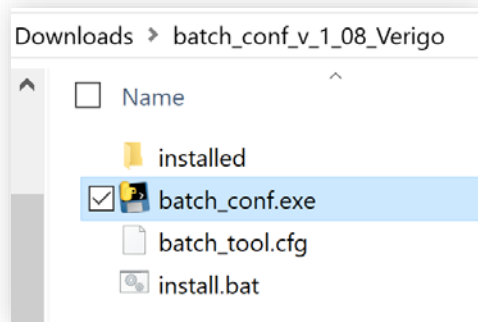
Before you begin, be sure that the USB Bluetooth Low Energy dongle is plugged into your computer. If you need an extra USB dongle, please contact your Verigo representative.



Insert the USB Bluetooth Low Energy dongle into the USB socket on your PC.

FIRST RUN

After a successful installation, return to the original folder that you created, and double-click **"batch_conf.exe"**. If you are using Windows 8 or 10 you will receive a warning the first time you open this tool, choose to allow the program to open.



Double Click on **"batch_conf.exe"**

If this is your first time opening the tool Windows might give you a warning. Click the **"Run anyway"** button to proceed.

CONFIGURING DEVICE SETTINGS

LOGIN

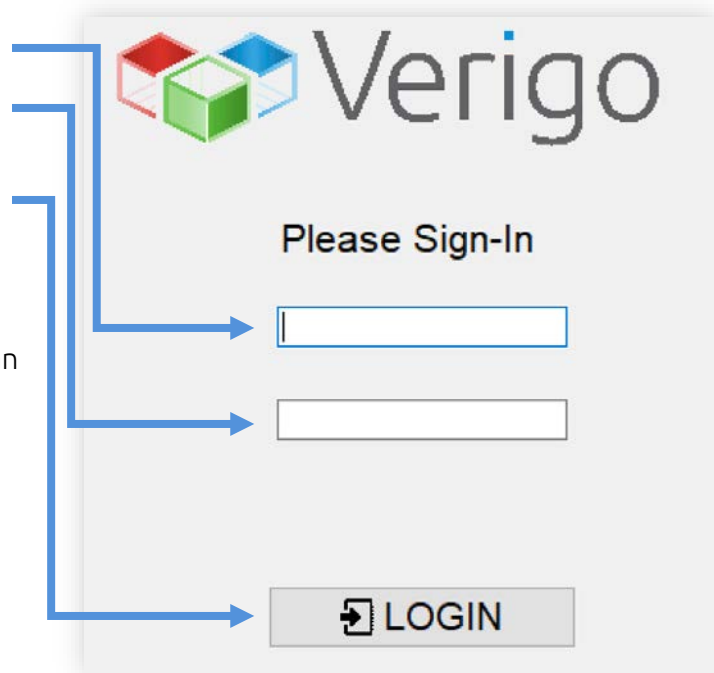
The first screen that you see is the login screen. You may use the same account credentials for your company to log in. If you do not have an account, go to www.cloud.verigo.io to create an account.

Enter your username on the first box.

Enter your password on the second box.

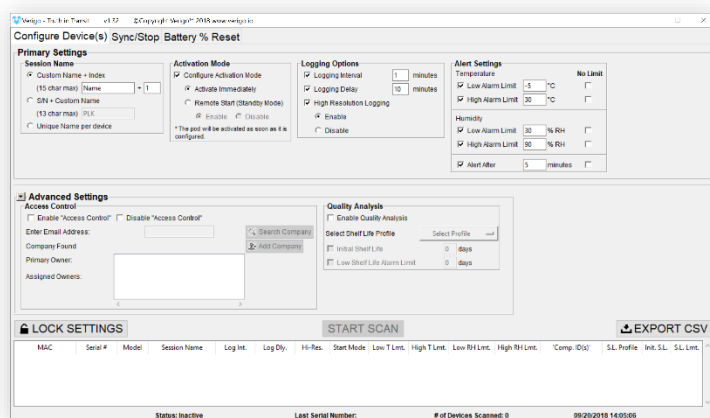
After you enter your account credentials click the **"LOGIN"** button to sign-in and access the tool.

If you would like an existing account to be setup for use with the configuration tool, please send an email including this request and the username to support@verigo.io.



CONFIGURING SETTINGS TO POD

Input the desired configurations from the options listed in the **"Primary Settings"** and **"Advanced Settings"** panes. If a particular setting is not selected using the checkbox to the left of that setting, the tool will not edit the value of that setting when programming the device.



Primary Settings



Advanced Settings

Primary Settings

Session Name
☒ Custom Name + Index
 (15 char max) +
☐ S/N + Custom Name
 (13 char max)
☐ Unique Name per device

Activation Mode
☒ Configure Activation Mode
☒ Activate Immediately
☐ Remote Start (Standby Mode)
☒ Enable ☐ Disable
* The pod will be activated as soon as it is configured.

Logging Options
☒ Logging Interval minutes
☒ Logging Delay minutes
☒ High Resolution Logging
☒ Enable ☐ Disable

Alert Settings
Temperature
☒ Low Alarm Limit °C ☐ No Limit
☒ High Alarm Limit °C ☐
Humidity
☒ Low Alarm Limit % RH ☐
☒ High Alarm Limit % RH ☐
☒ Alert After minutes ☐

Naming Options

Activation Mode

Logging Settings

Alert Settings

PRIMARY SETTINGS

In the primary settings section you will find the most basic settings for your logging session as well as the activation method. These settings will be used to configure and activate your batch of Pods.

- **Session name**; allows you to enter a custom name for each session or standard for all devices.
- **Activation Mode**; defines how the session starts (*immediately, button press, and/or remotely*).
- **Logging Options**; sets when and how frequent the device logs data.
- **Alert Settings**; sets a minimum and maximum, temperature and humidity threshold for your setting.

Advanced Settings

Access Control
☐ Enable "Access Control" ☐ Disable "Access Control"
 Enter Email Address:
 Company Found:
 Primary owner:
 Assigned owners:

Quality Analysis
☐ Enable Quality Analysis
 Select Shelf Life Profile
☐ Initial Shelf Life days
☐ Low Shelf Life Alarm Limit days

Device Settings
☐ New Calibration Date

Pod Access Control

Quality Analysis

Device Settings

ADVANCED SETTINGS

Advanced settings allow you configure access control, set quality analysis and other settings that are not available via the app.

- **Access Control**; allows you to control block access from unidentified companies and grant access to specific companies to your device.
- **Quality Analysis**; loads a shelf life profile to the logging session. This feature is only available for Pod Quality users.
- **Device Settings**; this section is only available for authorized users.

SCANNING NEARBY PODS

After entering your desired settings and confirming they are correct for the devices to be configured, the “**Lock Settings**” button. The “**Start Scan**” button will only become available after you lock your current settings. If you wish to modify your settings, you must click the “Unlock Settings” button.

To begin configuring devices, click the “**Start Scan**” button.



Press the “**Lock Settings**” button, then press the “**Start Scan**” to begin the process.

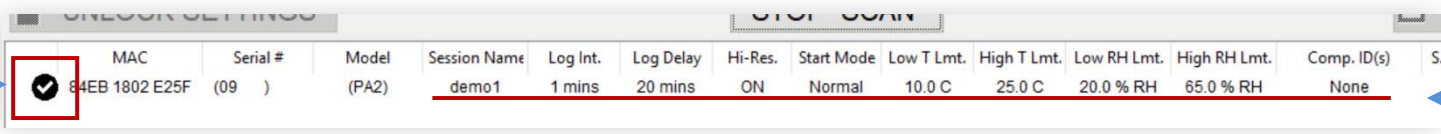
Bring the inactive device(s) to be configured to within less than 1 meter (*3 feet*) of the USB BLE dongle, and briefly tap the button on the first device that you would like to configure.



Bring the Pod close to the USB dongle and Press the button on Pod.

SCANNING NEARBY PODS: CONTINUED

After the button is tapped, you should hear two beeps from the device as the tool connects to and configures the Pod. Within 3-10 seconds the configuration will be complete, and an entry will appear in the table showing the details of the device and its configuration, with a “checkmark” symbol to the left of the table entry indicating “Success”.



The screenshot shows a table with the following columns: MAC, Serial #, Model, Session Name, Log Int., Log Delay, Hi-Res., Start Mode, Low T Lmt., High T Lmt., Low RH Lmt., High RH Lmt., Comp. ID(s), and S. The first row contains the following data: 84EB 1802 E25F, (09), (PA2), demo1, 1 mins, 20 mins, ON, Normal, 10.0 C, 25.0 C, 20.0 % RH, 65.0 % RH, None. A red checkmark is in the first column, and a red line is under the Session Name column.

	MAC	Serial #	Model	Session Name	Log Int.	Log Delay	Hi-Res.	Start Mode	Low T Lmt.	High T Lmt.	Low RH Lmt.	High RH Lmt.	Comp. ID(s)	S
✓	84EB 1802 E25F	(09)	(PA2)	demo1	1 mins	20 mins	ON	Normal	10.0 C	25.0 C	20.0 % RH	65.0 % RH	None	

Check mark indicates that the configuration was **completed**.

Table entry shows the settings that were configured to the Pod.

While the scanner is active you may configure multiple Pods by following the step above.

Please note: Be sure to keep the device within 3 feet of the Tool for the entire time that it is being configured.

The tool will not configure devices that are in the active monitoring state. You must stop any current monitoring session using the Verigo’s app before attempting to configure using the Windows batch configuration tool.

If the tool encounters an error while attempting to configure a particular device, a popup error dialog will appear with details, and the entry in the table will show a “warning” symbol to the left of the corresponding table entry.



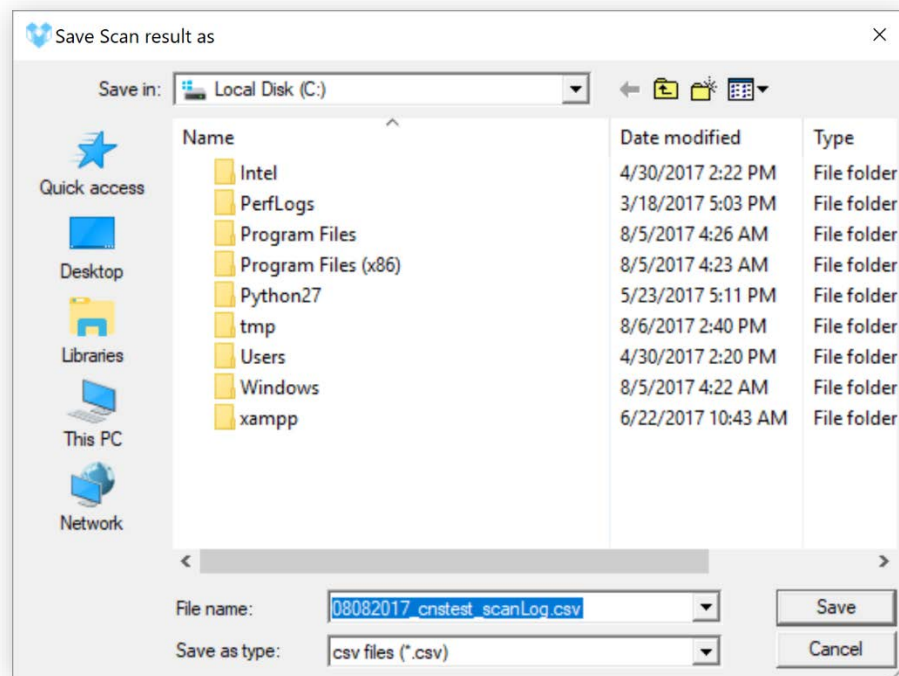
EXPORTING WORK LOG

If desired, you may save a CSV log containing records of all the scanned devices.

UNLOCK SETTINGS			STOP SCAN										EXPORT CSV			
	MAC	Serial #	Model	Session Name	Log Int.	Log Delay	Hi-Res.	Start Mode	Low T Lmt.	High T Lmt.	Low RH Lmt.	High RH Lmt.	Comp. ID(s)	S.L. Profile	Init. S.L.	S.L. Lmt.
✓	84EB 1802 E25F	(09)	(PA2)	demo3	1 mins	5 mins	ON	Normal	-10.0 C	25.0 C	20.0 % RH	55.0 % RH	None			
✓	F4B8 5EF2 4E77	()	(PA2)	demo2	1 mins	5 mins	ON	Normal	-10.0 C	25.0 C	20.0 % RH	55.0 % RH	None			
✓	88C2 55AF 960E	(011429)	(PE0)	demo1	1 mins	5 mins	ON	Normal	-10.0 C	25.0 C			None			

Click the Stop **“Scan button”** then select the **“Export CSV”** option.

1. When all devices have been configured, click **“Stop Scan”**
2. Then click the option **“Export CSV”**.
3. Select a folder that you wish to save the CSV
4. Click the **“Save”** button.



Click the Stop **“Scan button”** then select the **“Export CSV”** option.

SYNC AND STOP

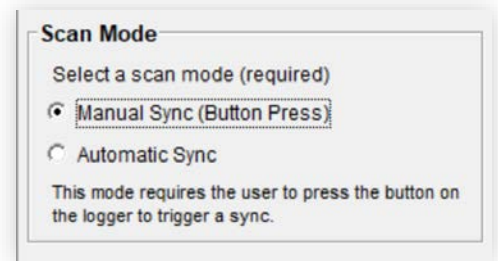
OVERVIEW

The PC tool can be used as a gateway to automatically sync and stop sessions. To access this feature simply select the Sync/Stop option located on the top navigation bar of the tool.

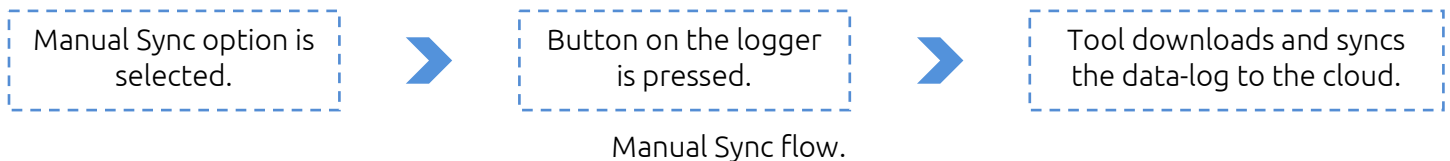


SCAN MODE

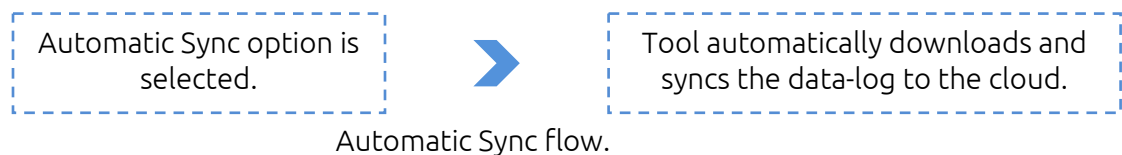
Scan mode is found in the settings option of the Sync/Stop tab. You may choose when and how the loggers are scanned. There are two different modes **Manual Sync** (default setting) and **Automatic Sync**.



Manual Sync; when this mode is selected you are required to press the button on the logger to trigger a sync.



Automatic Sync; any logger within the scan range will be automatically synchronized.

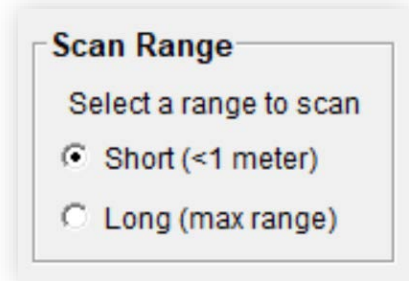


SCAN RANGE

Scan range allows you, to configure the distance of how far you want to tool to scan. This is especially helpful in operations where you would want to limit the number of Pods that you want to scan.

There are two ranges that you may choose from, short and long range*. Short range is less than 1 meter. Long range is the maximum range possible that the sensor can detect.

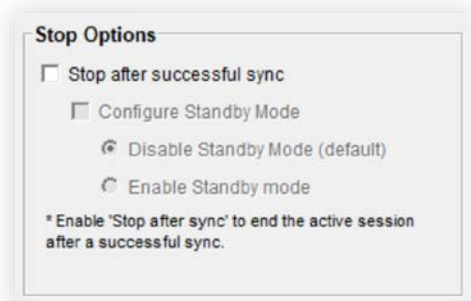
*It is worth noting that barriers such as walls, doors, and other objects can drastically affect the range that the tool can reach.



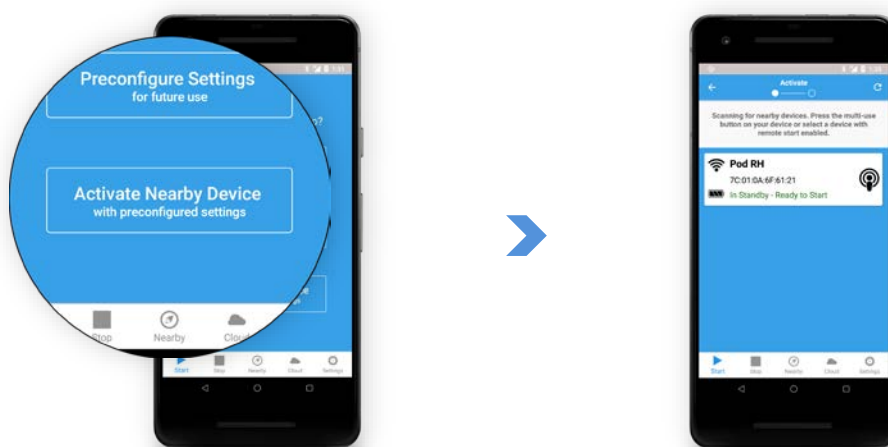
STOP OPTIONS

Besides the ability to sync you can also configure the tool to stop and end the logging session after syncing the data-log to the cloud.

To enable stop after sync, select the option to “**Stop after successful sync**”. When this option is selected the tool will stop the logger after a successful sync. Sessions that are not successfully synced will **not** be stopped.



In “**Stop Options**” section you can also enable or disable the remote activation feature. Enabling “**Standby Mode**” places your logger in standby state, which will allow you to start your logger remotely with the app a future time without having to physically access or touch the button on the logger. The logger can be activated at any time in the future using the “**Activate Nearby Device**”* tab.



Select “**Activate Nearby Device**” the Android app to activate loggers in standby mode.

*“Activate Now” tab is currently only available on the Android version of the app.

SCANNING NEARBY LOGGERS

The Sync/Stop feature acts in a similar fashion to the Configure Device(s) tab of the tool. First you must configure your desired settings (Scan mode, range, and stop options). Then you must lock your settings. After clicking the “[Lock Settings](#)” button, you will be able to start the scan by selecting the “[Start Scan](#)” button.

Configure Device(s) Sync/Stop Battery % Reset

Settings

Scan Mode

Select a scan mode (required)

☒ Manual Sync (Button Press)

☐ Automatic Sync

This mode requires the user to press the button on the logger to trigger a sync.

Scan Range

Select a range to scan

☒ Long (max range)

☐ Short (<1 meter)

Stop Options

☒ Stop after successful sync

☒ Configure Standby Mode

☐ Disable Standby Mode (default)

☒ Enable Standby mode

* Loggers will be deactivated after successful sync.

Enables the Remote Start (Standby Mode) feature, which allows you to remotely activate your logger using the mobile app.

Inactive

First choose your desired scan and stop options.

LOCK SETTINGS

START SCAN

Lock your settings in lock by clicking the “[Lock Settings](#)” button.

UNLOCK SETTINGS

START SCAN

Click the “[Start Scan](#)” button to initiate the scan.

Synced	Stopped	Serial #	Model	MAC	Session Name	Start Date	Stop Date	Start Method	Alert Status	Low Temp	High Temp
False	False	None	None	7C010A6F6121	Woha	None	None	None	None	None	None

The list is populated with loggers that are found.

Synced	Stopped	Serial #	Model	MAC	Session Name	Start Date	Stop Date	Start Method	Alert Status	Low Temp	High Temp
True	True	95771	PA2	7C010A6F6121	Woha	2018-06-13 21:13:12+00:00	2018-06-13 21:13:29.687000	ButtonPress	No Alerts	27.87	27.87

After a session is synced the entry on the list is updated with the session information.

